





# Diagram 1

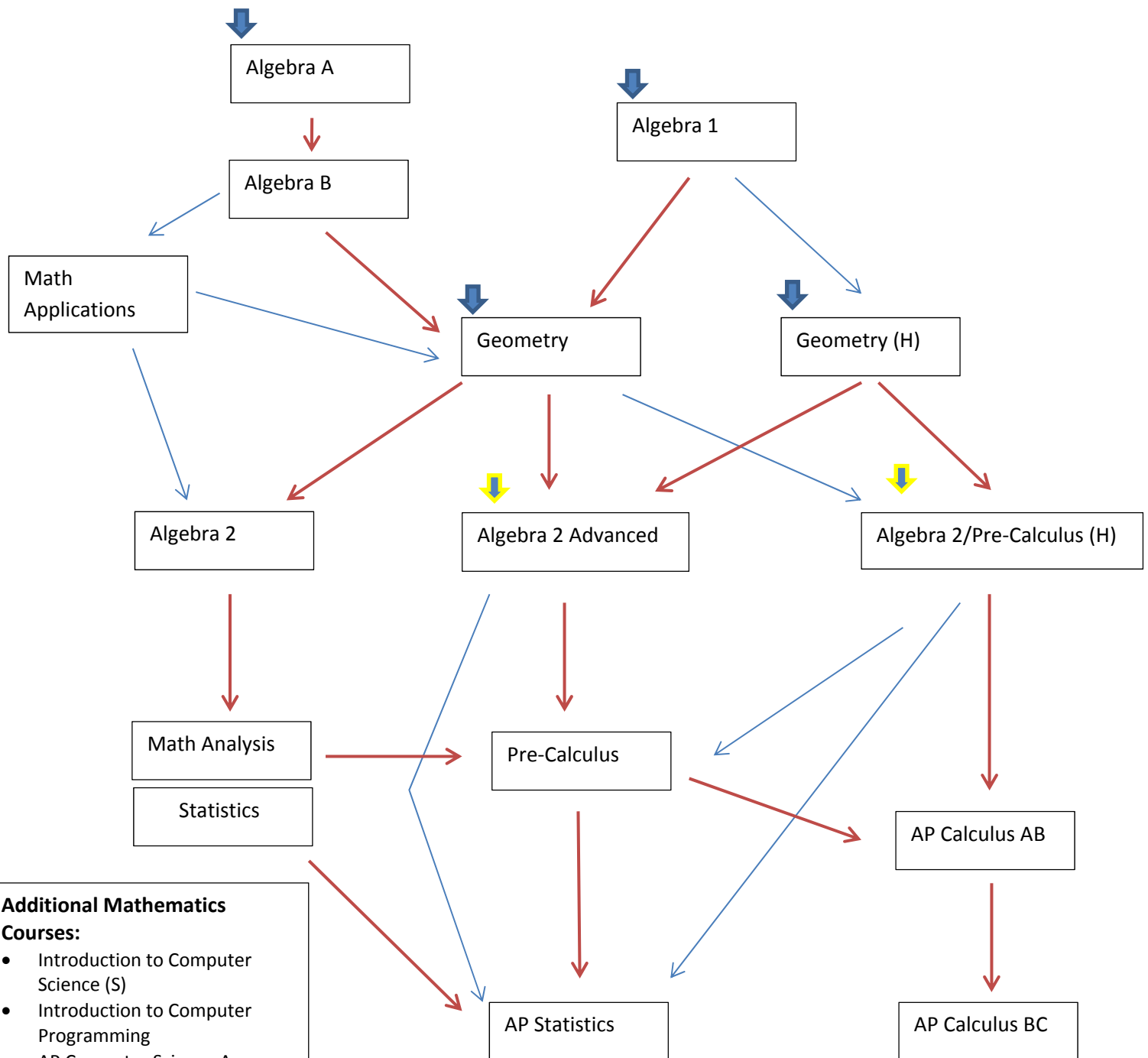
## Acalanes Union High School District

### Mathematics Course Pathways

#### Math Pathways: Grade 8 – 12

 9<sup>th</sup> grade entry class 
  Non common 9<sup>th</sup> grade entry class

 Common math pathway 
  Non common pathway

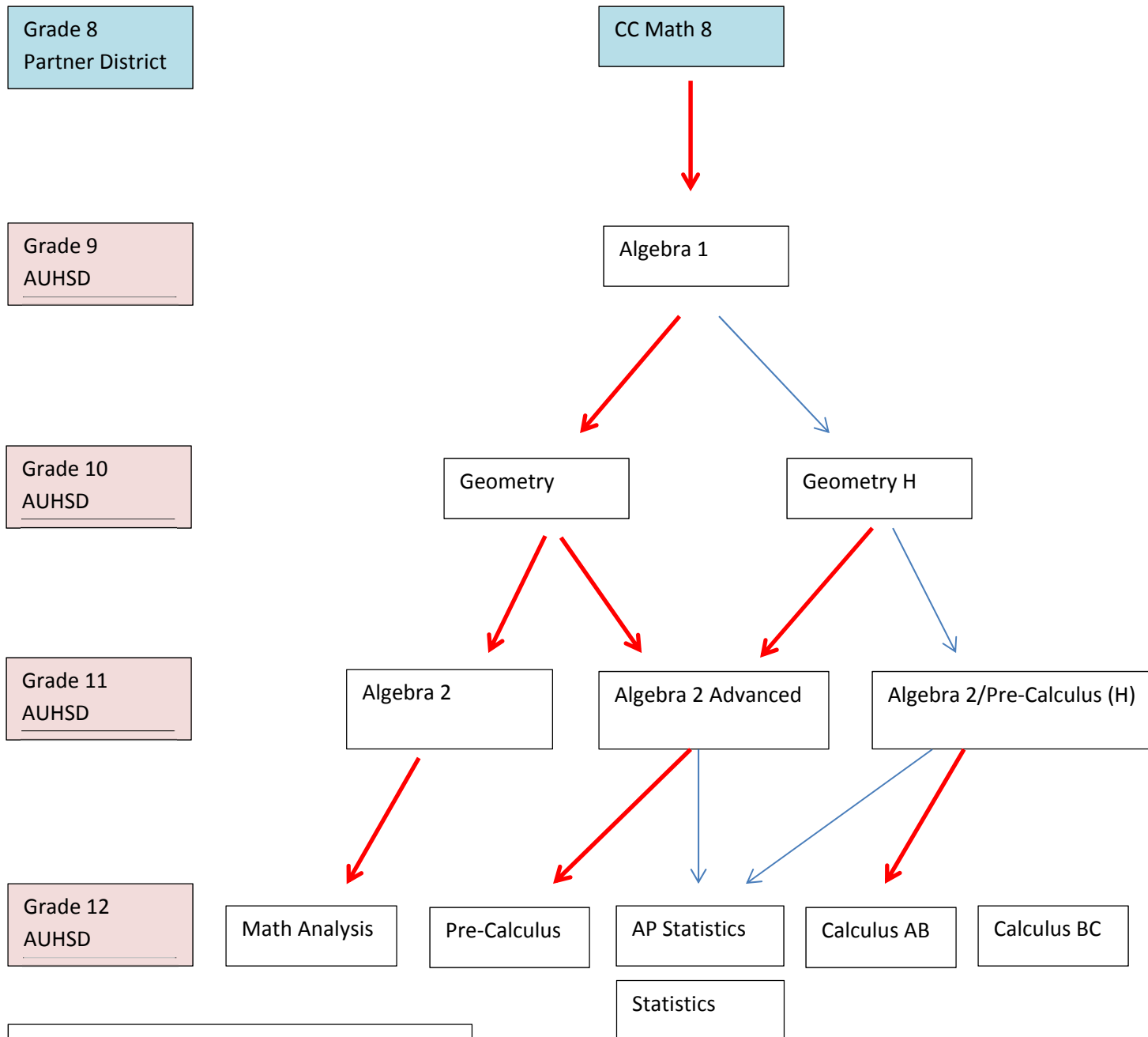


## Diagram 2

**Math Pathways Grade 8 – 12;**

**Mathematics Pathways (includes high school acceleration option)**

→ Pathways marked in red represent the common (recommended) pathway



### **Additional Mathematics Courses:**

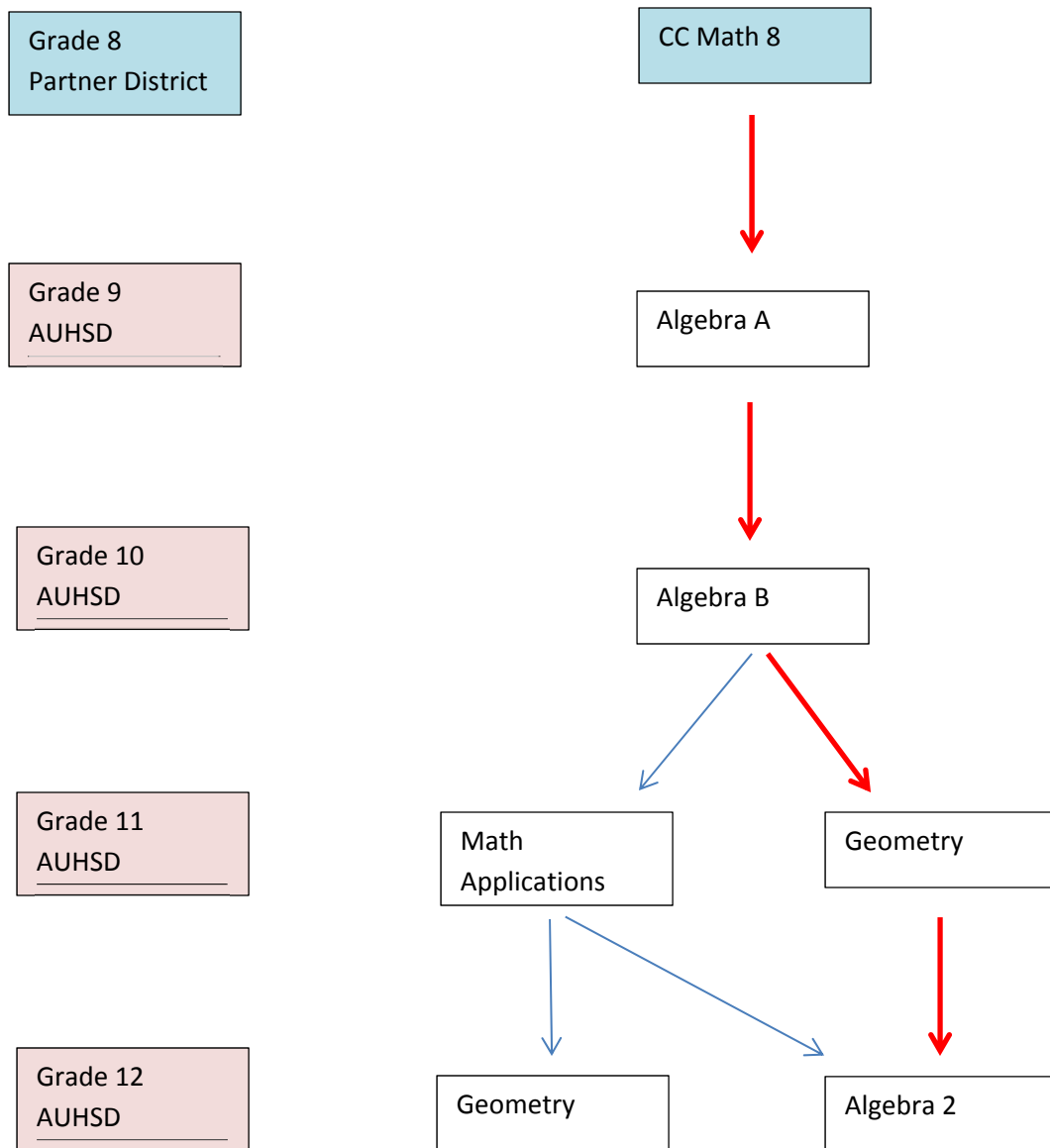
- Introduction to Computer Science (S)
- Introduction to Computer Programming
- AP Computer Science A
- AP Computer Science Principles

*\*AP Statistics is commonly taken concurrently with AP Calculus BC or AP Calculus AB*

## Diagram 3

### Math Pathways Grade 8 – 12; Expanded Pathway

→ Pathways marked in red represent the common pathway



#### Additional Mathematics Courses:

- Introduction to Computer Science (S)
- Introduction to Computer Programming
- AP Computer Science A
- AP Computer Science Principles

## Diagram 4

### Math Pathways Grade 8 – 12; Accelerated Pathway

*\*Pathway for students who have accelerated in Middle School*

→ Pathways marked in red represent the common (recommended) pathway

